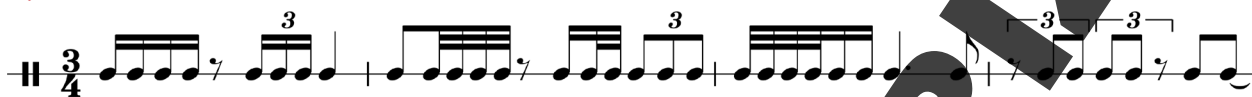


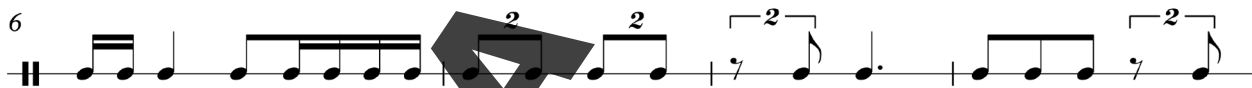
LEITURAS RÍTMICAS .....	5
MÉTRICA REGULAR E IRREGULAR	
LEITURAS RÍTMICAS .....	13
A DUAS PARTES   MÉTRICA REGULAR E IRREGULAR	
LEITURAS DE NOTAS EM CLAVES .....	15
CLAVE DE SOL   CLAVE DE FÁ   CLAVE DE DÓ	
DISSOCIAÇÕES RÍTMICAS E MELÓDICAS .....	19
TRANSPOSIÇÕES.....	23
LEITURAS MELÓDICAS .....	25
LEITURAS ATONAIS .....	37
CANÇÕES DE REPORTÓRIO .....	39

LEITURAS RÍTMICAS  
MÉTRICA REGULAR E IRREGULAR

1.



2.



18.

Musical score for exercise 18, measures 1-3. The score is in 12/8 time. Measure 1 contains a triplet of eighth notes. Measure 2 contains a triplet of eighth notes. Measure 3 contains a triplet of eighth notes. The bass line consists of eighth notes and quarter notes.

19.

Musical score for exercise 19, measures 1-5. The score is in 6/4 time. Measure 1 contains a dotted half note. Measure 2 contains a dotted half note. Measure 3 contains a dotted half note. Measure 4 contains a dotted half note. Measure 5 contains a dotted half note. The bass line consists of quarter notes and eighth notes.

20.

Musical score for exercise 20, measures 1-6. The score is in 5/8 time. Measure 1 contains a dotted quarter note. Measure 2 contains a dotted quarter note. Measure 3 contains a dotted quarter note. Measure 4 contains a dotted quarter note. Measure 5 contains a dotted quarter note. Measure 6 contains a dotted quarter note. The bass line consists of eighth notes and quarter notes.

21.

Musical score for exercise 21, measures 1-11. The score is in 5/8 time. Measure 1 contains a dotted quarter note. Measure 2 contains a dotted quarter note. Measure 3 contains a dotted quarter note. Measure 4 contains a dotted quarter note. Measure 5 contains a dotted quarter note. Measure 6 contains a dotted quarter note. Measure 7 contains a dotted quarter note. Measure 8 contains a dotted quarter note. Measure 9 contains a dotted quarter note. Measure 10 contains a dotted quarter note. Measure 11 contains a dotted quarter note. The bass line consists of eighth notes and quarter notes.

3.

Musical score for exercise 3, consisting of three staves of music in bass clef with a 2/4 time signature. The first staff starts at measure 3, the second at measure 9, and the third at measure 13. The music features eighth and sixteenth notes with various rests.

4.

Musical score for exercise 4, consisting of four staves of music with mixed clefs and time signatures. The first staff is in treble clef with 2/4 time, the second in bass clef with 2/4 time, the third in bass clef with 3/4 time, and the fourth in bass clef with 2/4 time. The music includes eighth, sixteenth, and quarter notes.

5.

Musical score for exercise 5, consisting of three staves of music in bass clef with 6/8 and 3/4 time signatures. The first staff is in 6/8 time, the second in 3/4 time, and the third in 3/4 time. The music features eighth and sixteenth notes.

5.

J. Haydn - "Psalm LXI"

Soprano

Alto

Baixo

Long life shall Is - ra-el's king be - hold, and a - ges

Long life shall Is - ra-el's king be - hold, and a - ges

Long life shall Is - ra-el's king be - hold, and a - ges

6

count on a - ges roll'd; with last - ing joy thy ser - vant's

count on a - ges roll'd; with last - ing joy thy ser - vant's

count on a - ges roll'd; with last - ing joy thy ser - vant's

12

eyes shall see his child - ren's child - ren rise.

eyes shall see his child - ren's child - ren rise.

eyes shall see his child - ren's child - ren rise, shall see his child - ren's child - ren rise.

8.

D. Joly - "Le Solfège Contemporain"

Andante ♩ = 80  
*p*

Andante ♩ = 80  
*p*

11

*p* cresc. *f*

20

*mf* *p*



13

so - li - dão à mi-nha es - pe - ra Sem - pre sem ser con-vi - da - da

17

Sem - pre fi - el sem me dei - xar. Sa - bes? eu a - in - da te - nho um so - nho de um

21

di - a es - tar a a - brir a por - ta e ver que tu es - tás a sor - rir pa ra mim com

25

o - lhos tão do - ces de luz. A lu - a quan - do pen - so em ti vol - ta a - pa - re